



# BITTERROOT RESOURCES LTD.

TSX-V: BTT

October 7, 2025  
CORPORATE PRESENTATION

*Nickel/Copper in Michigan*

*Gold/Silver/Copper in Nevada*



# DISCLAIMER

This presentation (the “Presentation”) has been prepared by Bitterroot Resources Ltd. (the “Company”) solely for information purposes.

The information contained in this Presentation does not constitute or form part of, and should not be construed as, an offer or invitation to subscribe for or purchase the securities discussed herein in any jurisdiction. Neither this Presentation nor any part of it shall form the basis of, or be relied upon in connection with any offer, or act as an inducement to enter into any contract or commitment whatsoever. No representation or warranty is given, express or implied, as to the accuracy of the information contained in this Presentation.

This Presentation contains certain forward-looking statements relating to the business, financial performance and results of the Company and/or the industry in which it operates. Forward-looking statements concern future circumstances and results and other statements that are not historical facts. The forward-looking statements, contained in this Presentation, including assumptions, opinions and views of the Company or cited from third party sources are solely opinions and forecasts which are uncertain and subject to risks. A multitude of factors can cause actual events to differ significantly from any anticipated development. Neither the Company nor any such person’s, officers or employees guarantee that the assumptions underlying such forward-looking statements are free from errors and omissions nor do any of them accept any responsibility for the future accuracy of the opinions expressed in this Presentation or the actual occurrence of the forecasted developments.

The information contained herein has been prepared to assist the Recipients in making their own evaluation on the Company and does not purport to contain all information that they may desire. In all cases, the Recipients should conduct their own investigation and analysis of the Company, its business, prospects, results of operations and financial condition as well as any other information the Recipients may deem relevant. The Company does not make any representation or warranty, express or implied, as to the accuracy or completeness of this Presentation or of the information contained herein and shall have no liability for the information contained in, or any omissions from, this Presentation, nor for any of the written, electronic or oral communications transmitted to the Recipients (including without limitation its directors, employees, representatives and advisors).

Neither the receipt of this Presentation by any Recipients, nor any information contained herein or supplied herewith or subsequently communicated in written, electronic or oral form to any person in connection with the contemplated issue of shares in the Company constitutes, or shall be relied upon as constituting, the giving of investment advice to any such person. Each person should make their own independent assessment of the merits of investing in the Company and should consult their own professional advisors. By receiving this Presentation, you acknowledge and agree that you will be solely responsible for your own assessment of the market and the market position of the Company and that you will conduct your own analysis and are solely responsible for forming your own opinion of the potential future performance of the Company’s business.

Mr. Charles Greig, P.Geo, is the Qualified Person responsible for the technical content in this presentation pertaining to the Nighthawk Gold Project.

Mr. Jeff Rowe, P.Geo, is the Qualified Person responsible for the technical content in this presentation pertaining to the LM Nickel Project.

# ***LM Project - Ownership***

- 51 % Bitterroot Resources Ltd. (operator)

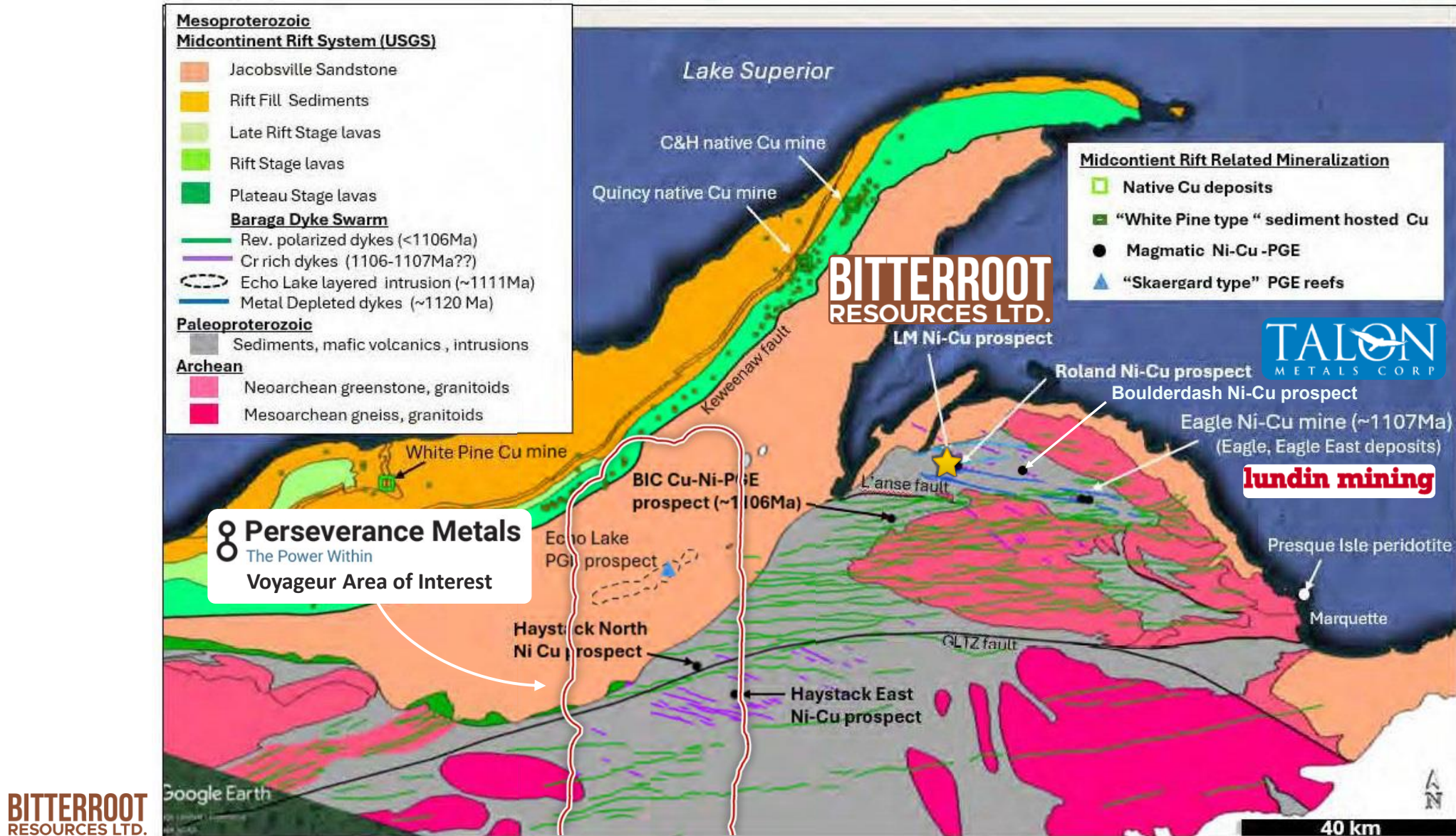
Symbol BTT, listed on the TSX-Venture Exchange

- 49% Below Exploration, Inc.

A privately-owned Michigan corporation

***Targeting high-grade magmatic nickel-copper sulphides  
in the Upper Peninsula of Michigan***

# REGIONAL GEOLOGY & DEPOSITS – UPPER PENINSULA OF MICHIGAN

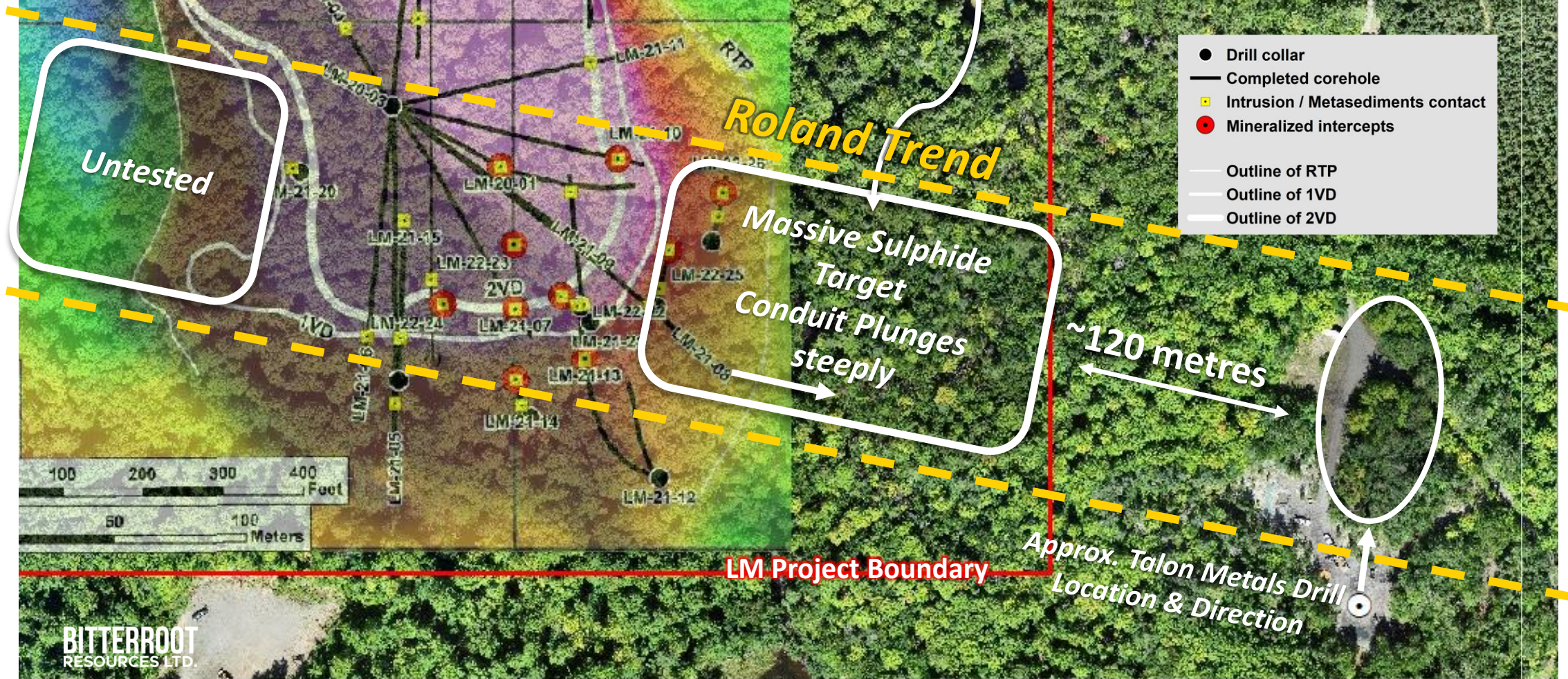


Source: Rossell and Strandlie, 2024, Potential links between the Midcontinent Rift (MCR) related Baraga-Marquette dyke swarm and early MCR related magmatic Ni-Cu sulphide deposits in Michigan, USA. 2024 International Ni-Cu Symposium Abstracts Volume, Thunder Bay, August 6-8th 2024, p. 70-71.



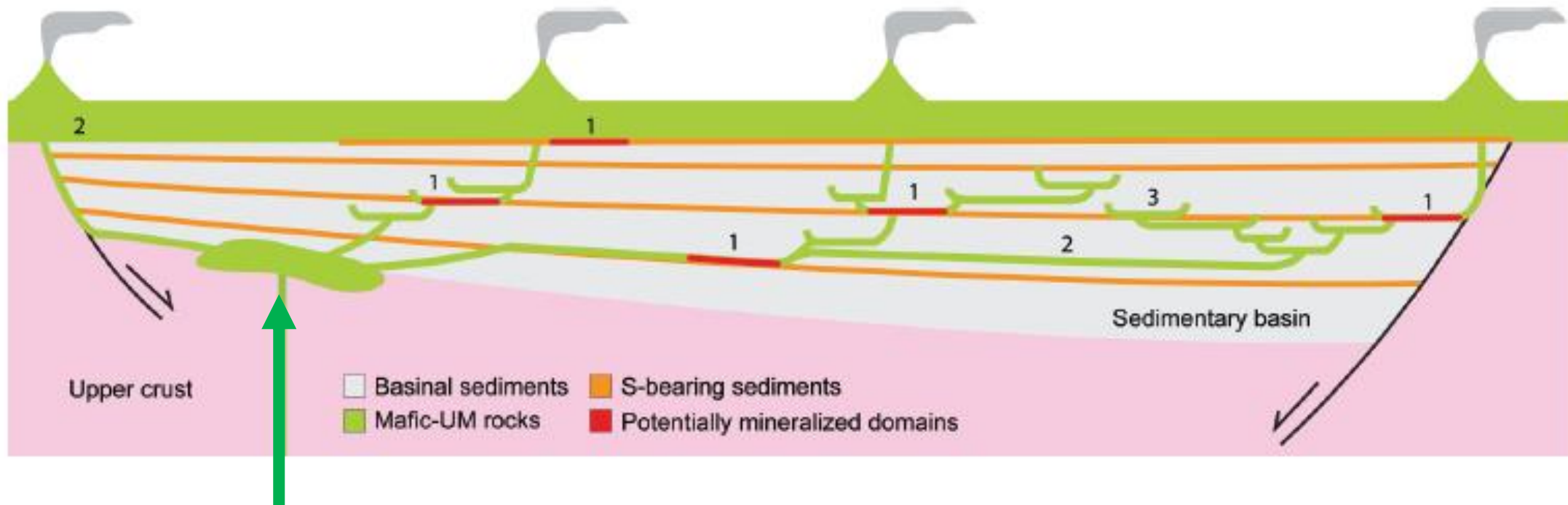
THE ROLAND TREND IS HIGHLY PROSPECTIVE

NEXT STEP – DRILL THE  
LM GAP





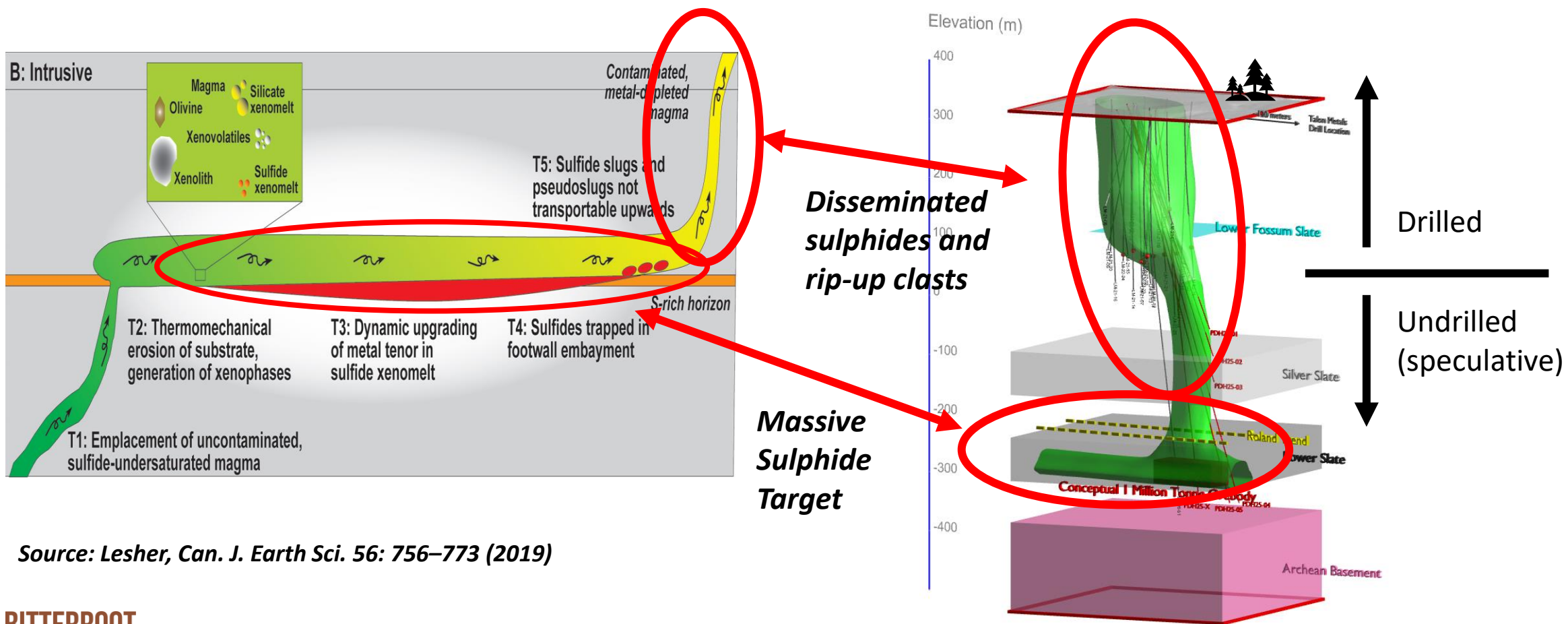
# ***Magma Conduits in Sedimentary Basins***



***Rising Magma***

*Source: Leshar, Can. J. Earth Sci. 56: 756–773 (2019)*

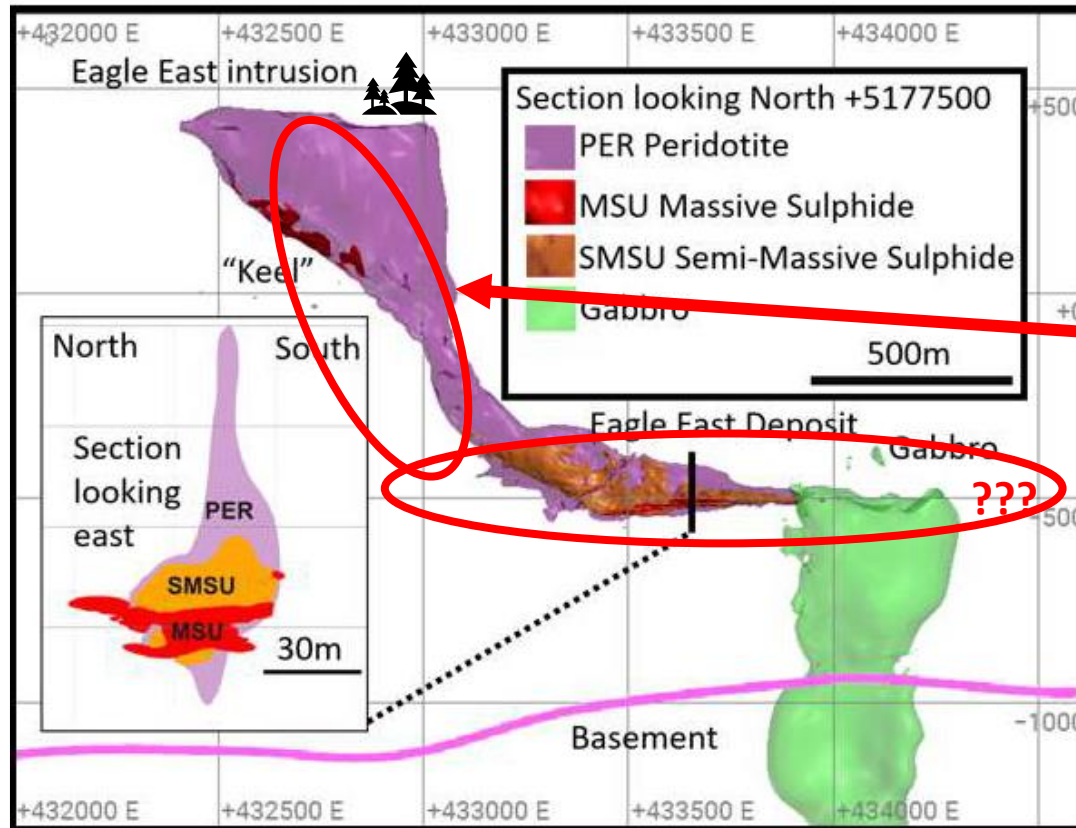
# Magma conduits - Schematic Longitudinal Section



Source: Lesher, *Can. J. Earth Sci.* 56: 756–773 (2019)

Source: Bitterroot Resources Internal Report

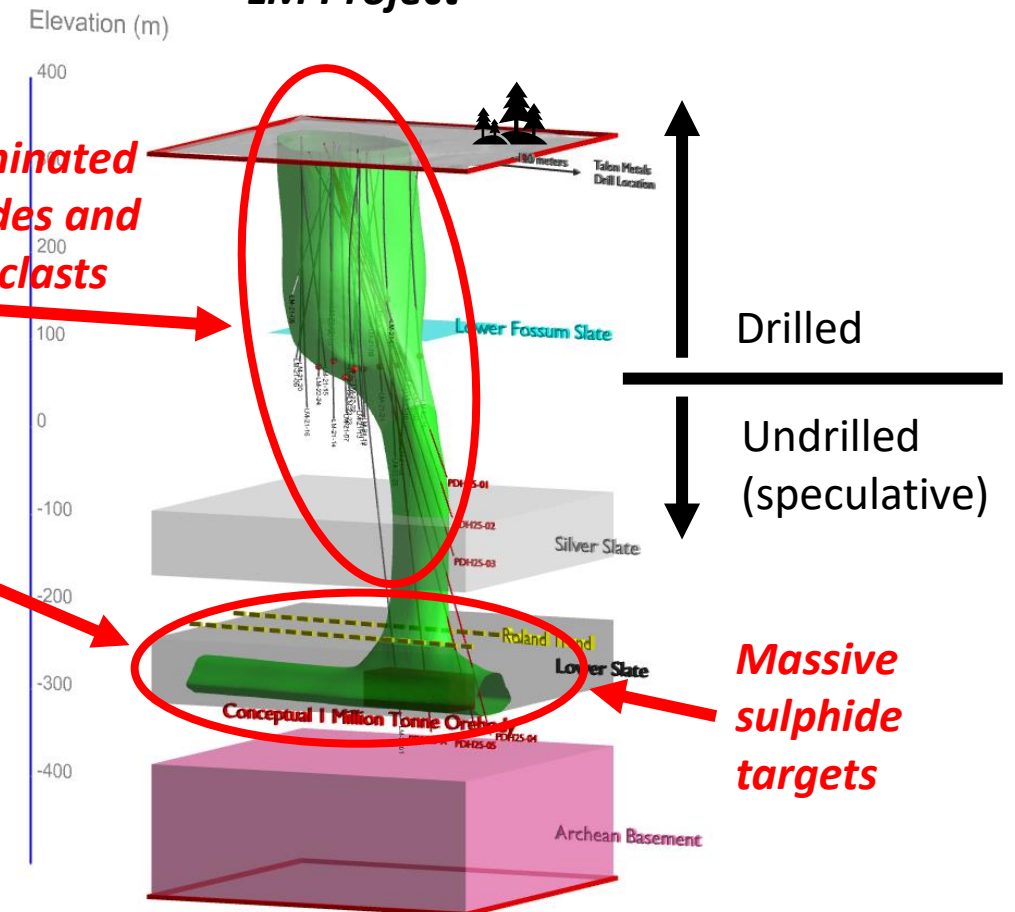
# Magma Conduits – Step Pattern Eagle East and LM Project



Source: Lundin Mining NI 43-101 Technical Report on the Eagle Mine, Michigan, USA, (2022)

## LM Project

*Disseminated sulphides and rip-up clasts*



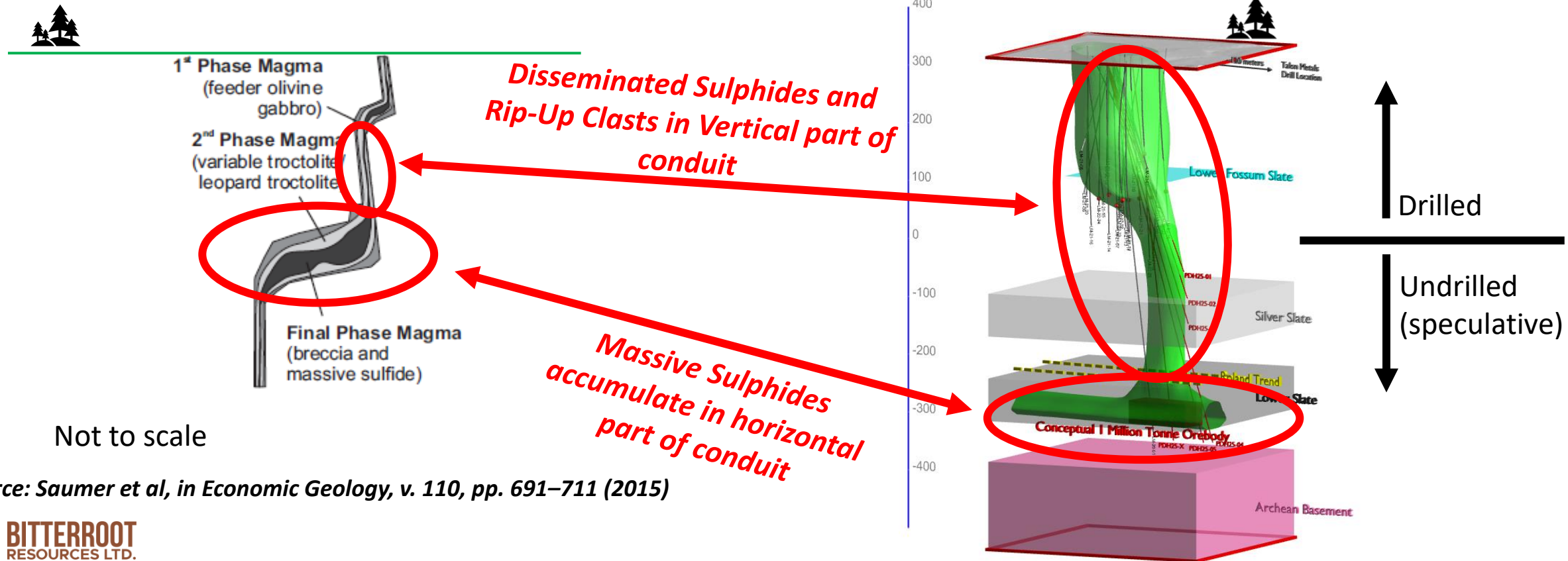
Source: Bitterroot Resources Internal Report



# Magma conduits – Step Pattern Voisey's Bay and LM Project

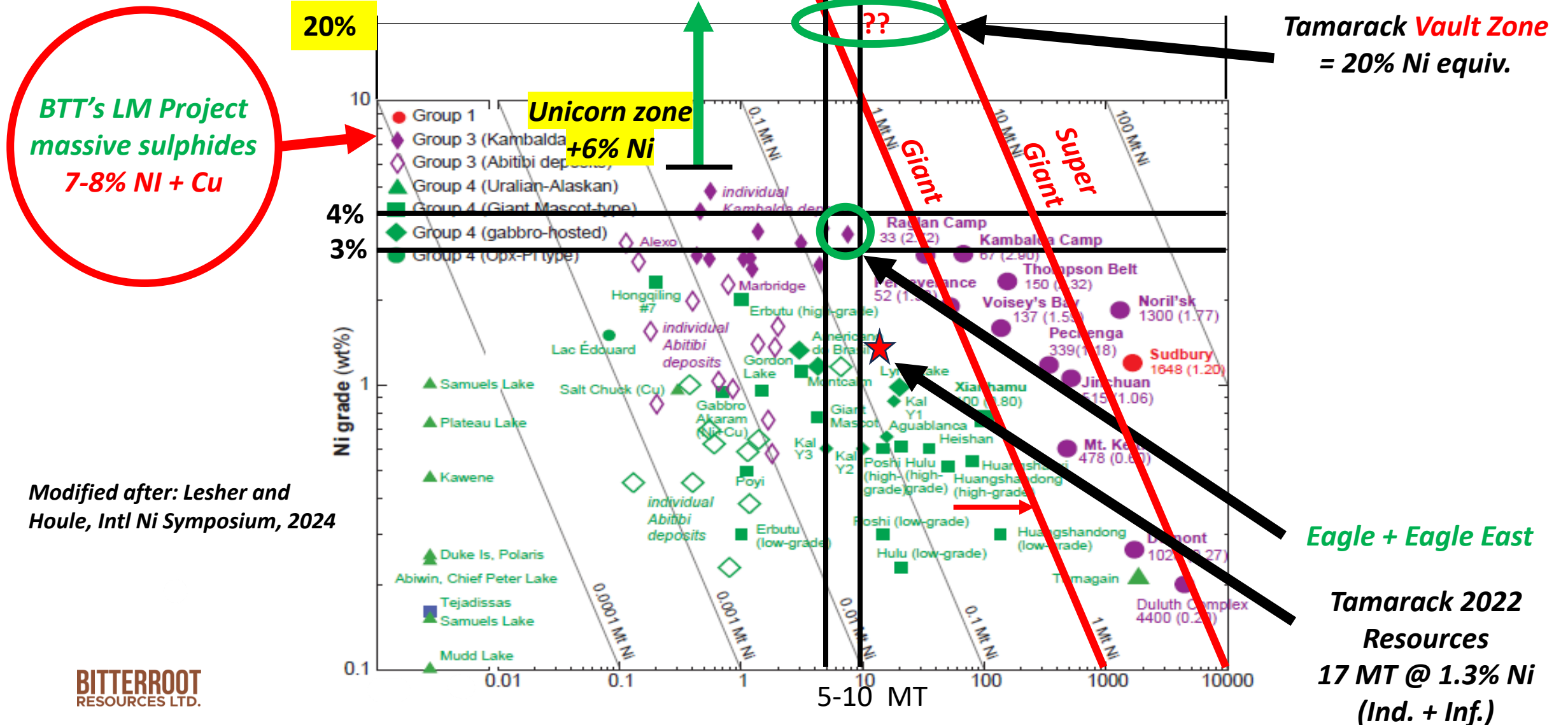
## Voisey's Bay – Discovery Hill Dike Mineralized Conduit - Step Pattern

## LM Project



Source: Bitterroot Resources Internal Report

# Global Ni Deposits - Tonnage vs Grade



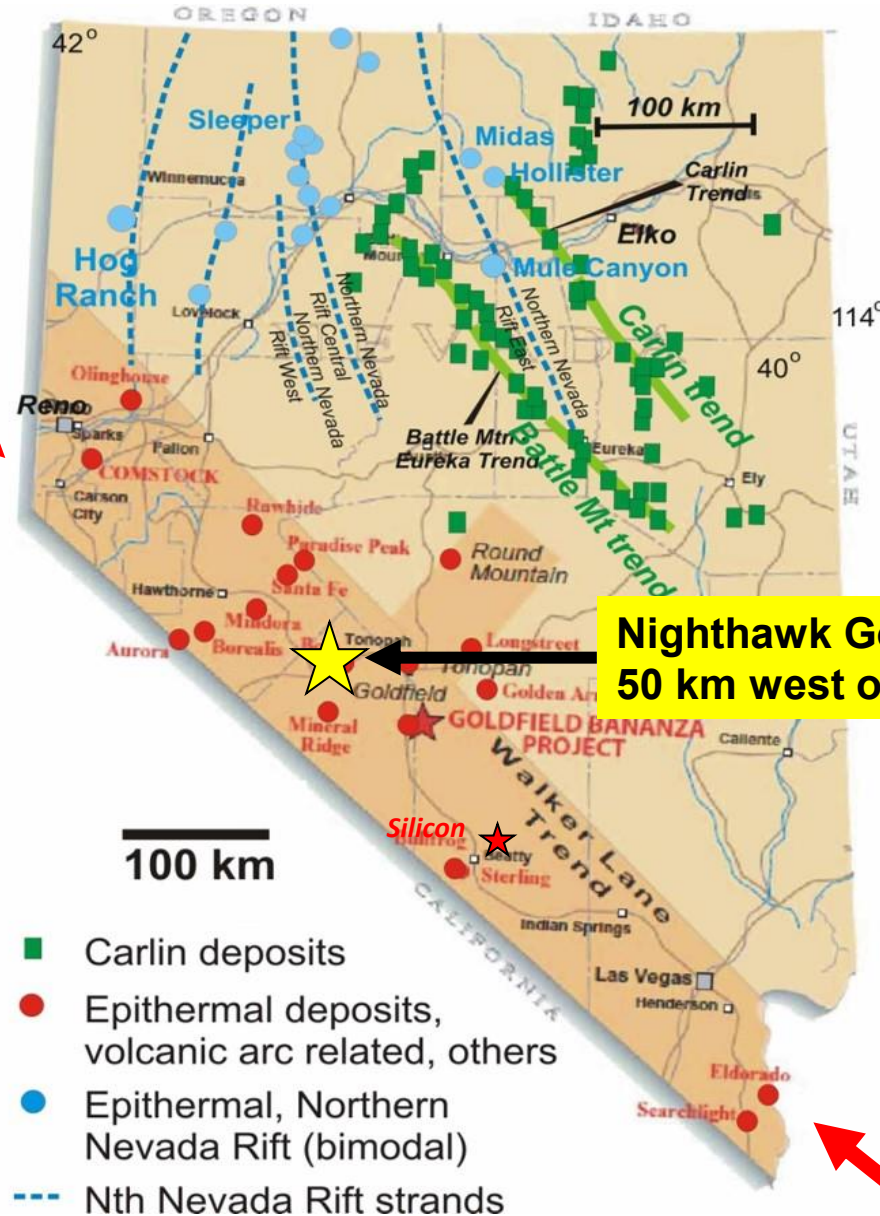


# ***LM Project – Catalysts in 2025***

1. Renewed interest in magmatic nickel/copper sulphide deposits from Institutional and Retail investors and the US Government
2. Talon drilling results pending from their Roland Target,
3. Department of Defense Funding ? A work in progress with no guarantees of success,
4. Perseverance Metals Inc. IPO/TSX-V listing in October 2025,  
BTT owns 1,689,334 shares, free trading 4 months later,

# Nevada – The Leading US Mining State

Walker Lane  
Gold District



Nighthawk Gold Project  
50 km west of Tonopah



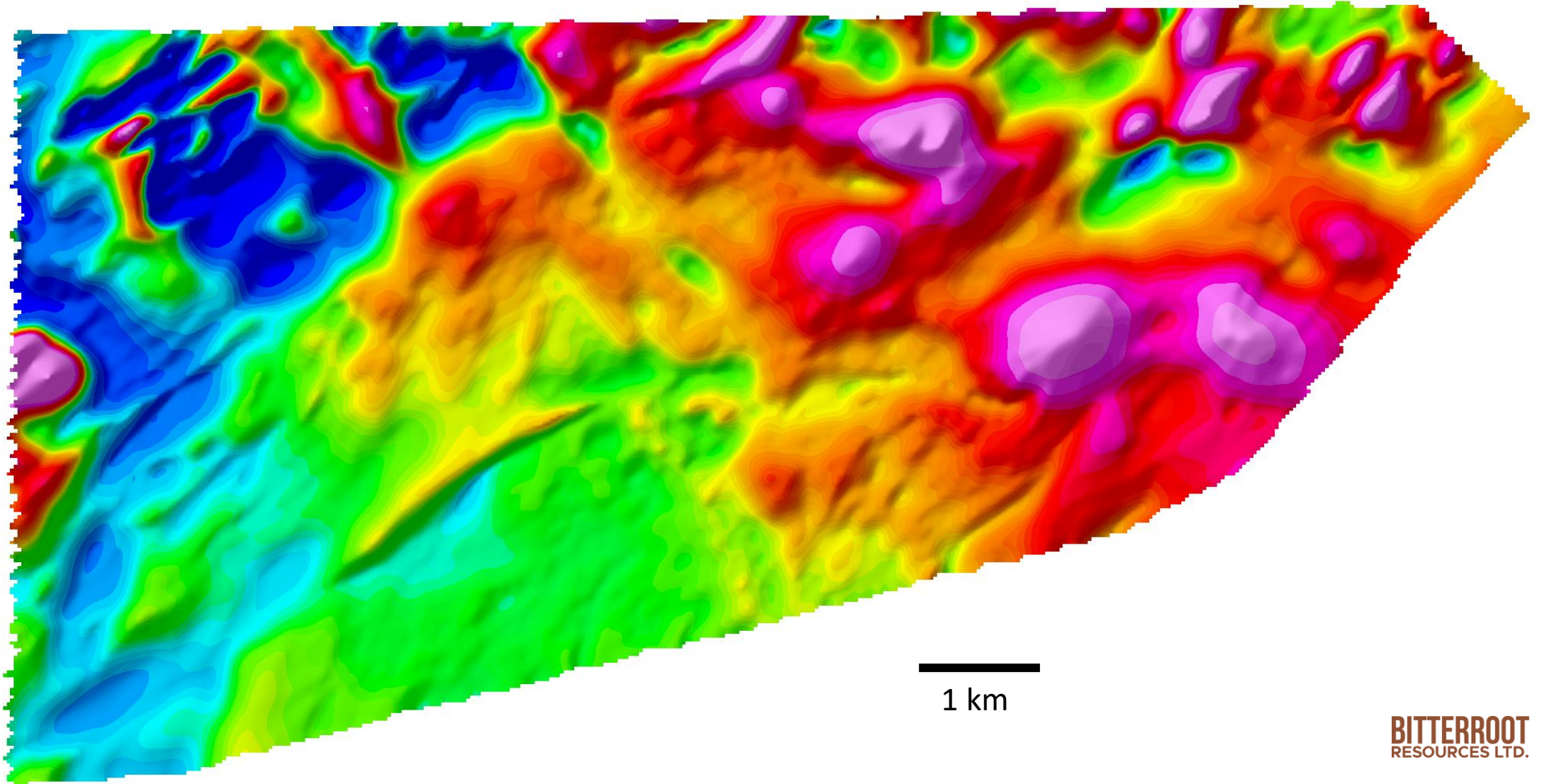
# ***“Pediment”***

***“A plain of eroded bedrock (often covered by a thin veneer of alluvium) in an arid region, developed between mountain and basin areas”***



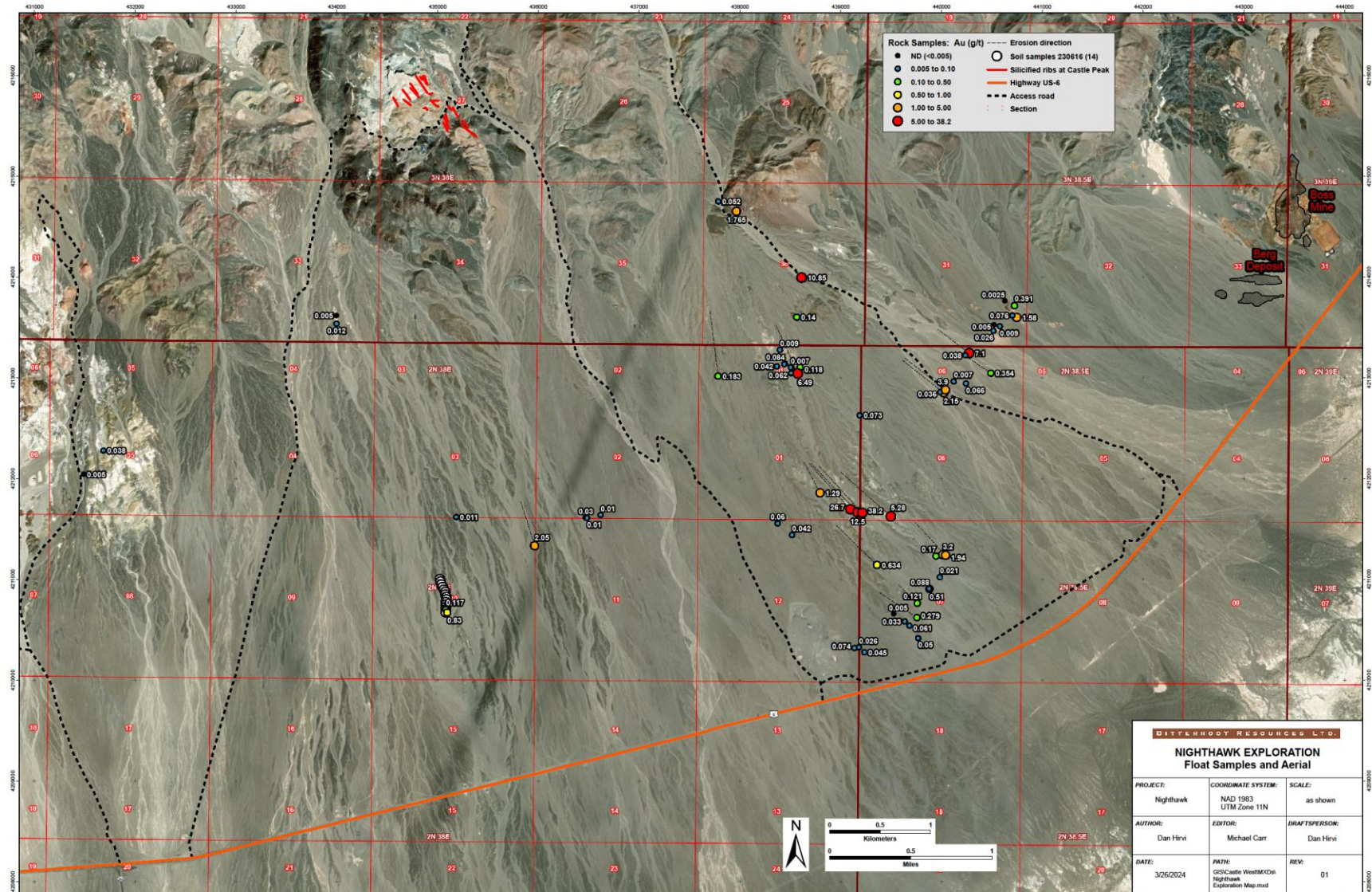
***There is outcrop and gold mineralization out there !***

# ***Nighthawk Aeromagnetics (TMI)***





# Nighthawk Prospecting



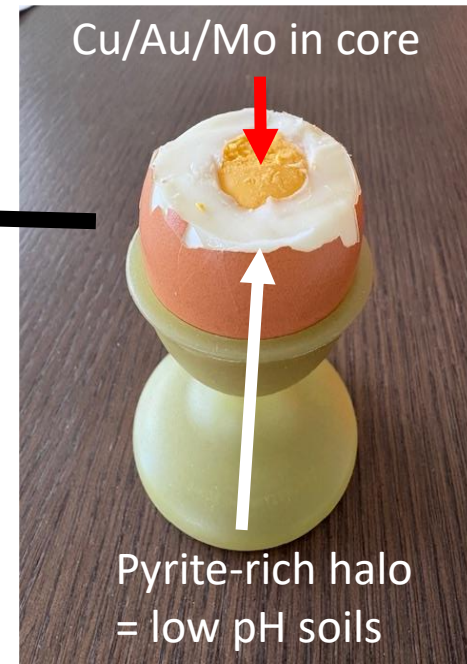
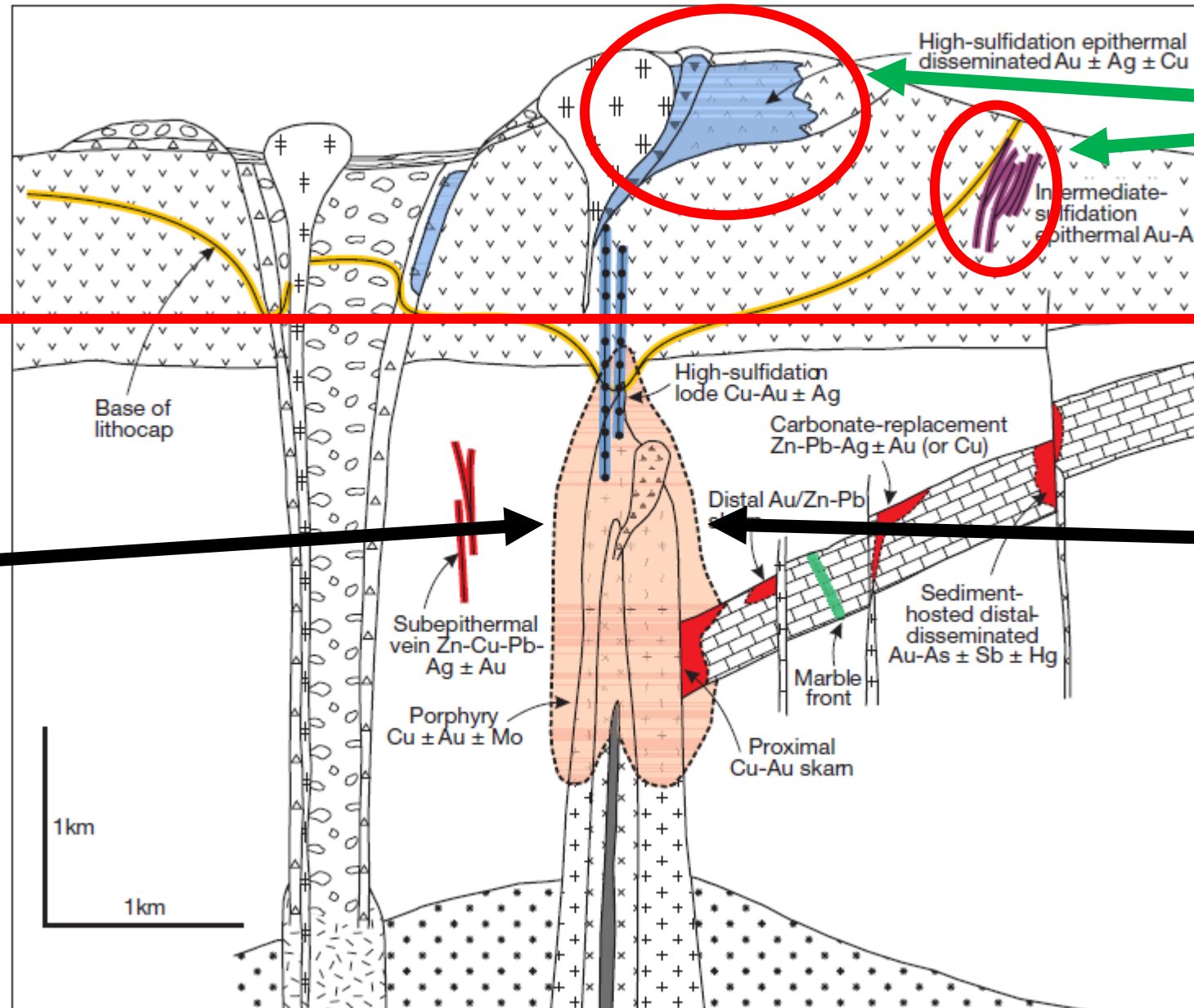


# Dr. Richard Sillitoe's Porphyry Copper/Epithermal Gold Model

**Nighthawk Property**  
**Erosional Level at**  
**Line 22**

**Line 22**  
**Near-Surface**  
**Porphyry Copper**  
**Target**  
**(Cu/Au/Mo)**

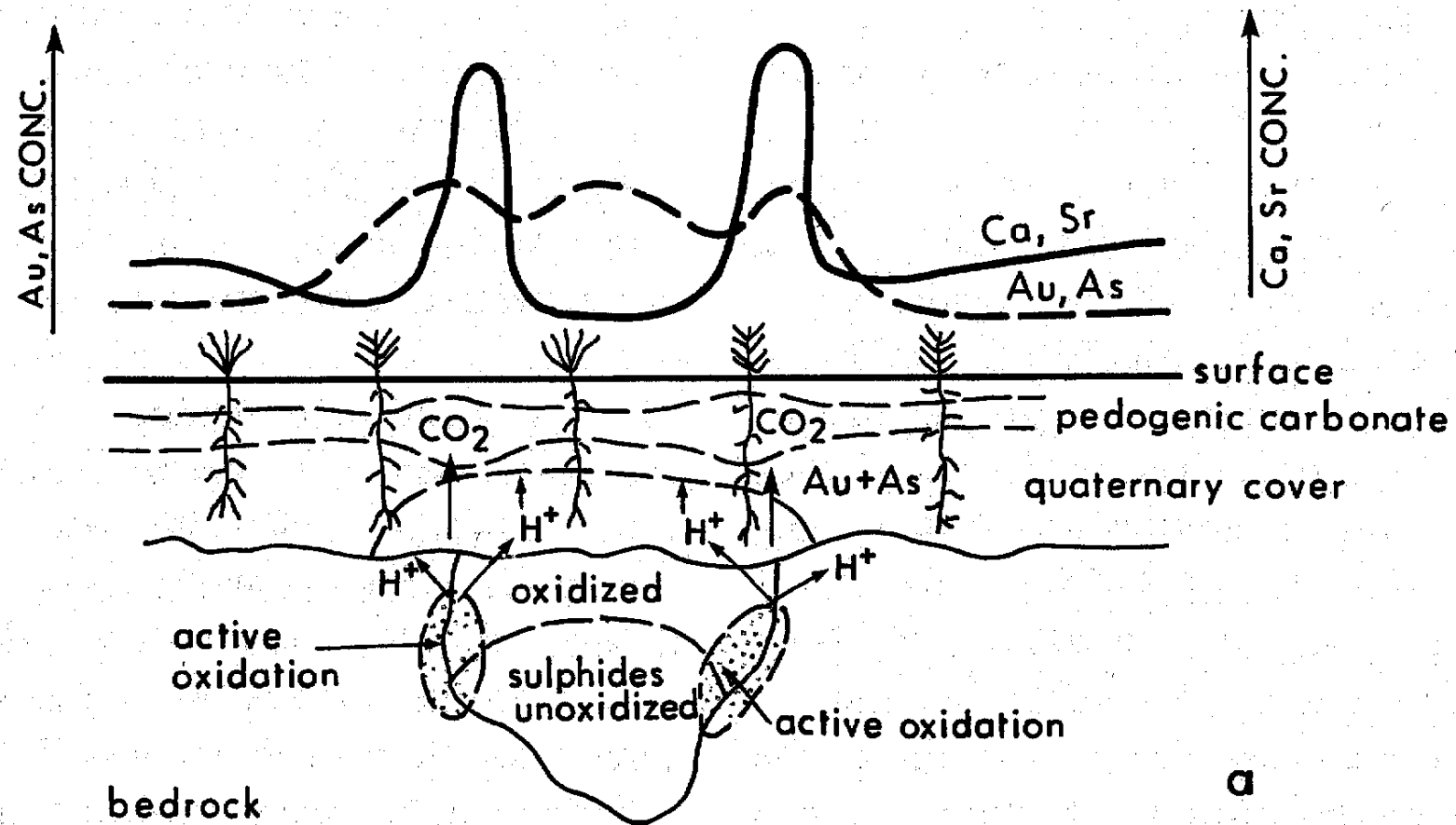
**Lines 1-7**  
**Epithermal**  
**Vein/Stockwork**  
**Targets**  
**(Au/Ag +/-Cu)**



**Line 22 analogy**



# Dr. Barry Smee's Soil pH Model



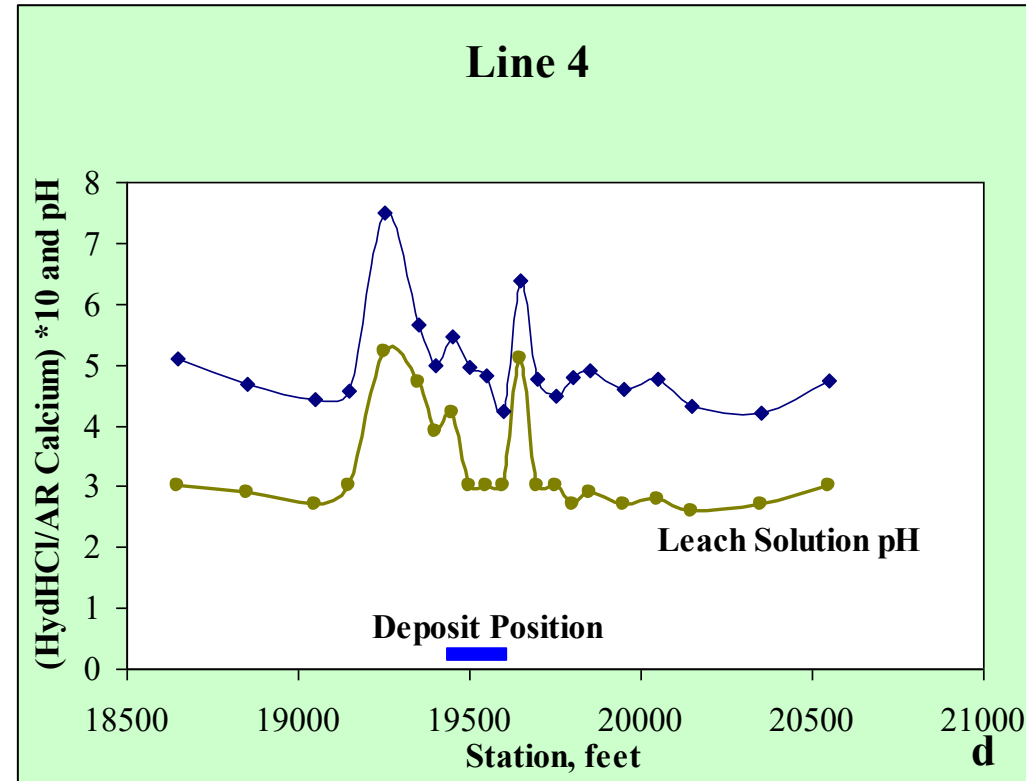
# Dr. Barry Smee's *IDH Factor*

*"In one of those moments when you are amazed at your own stupidity, I realized that the leach solution, being unbuffered, would mimic the Ca content of the soil. This presented the possibility that a simple soil pH with distilled water could be an effective tool in areas of thick overburden."*

*"This was shared in 1999."*

*"Not many people really believed that a bottle of water and a pH meter would be an effective tool in covered areas. It was too simple and did not cost anything."*

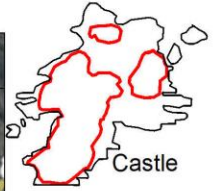
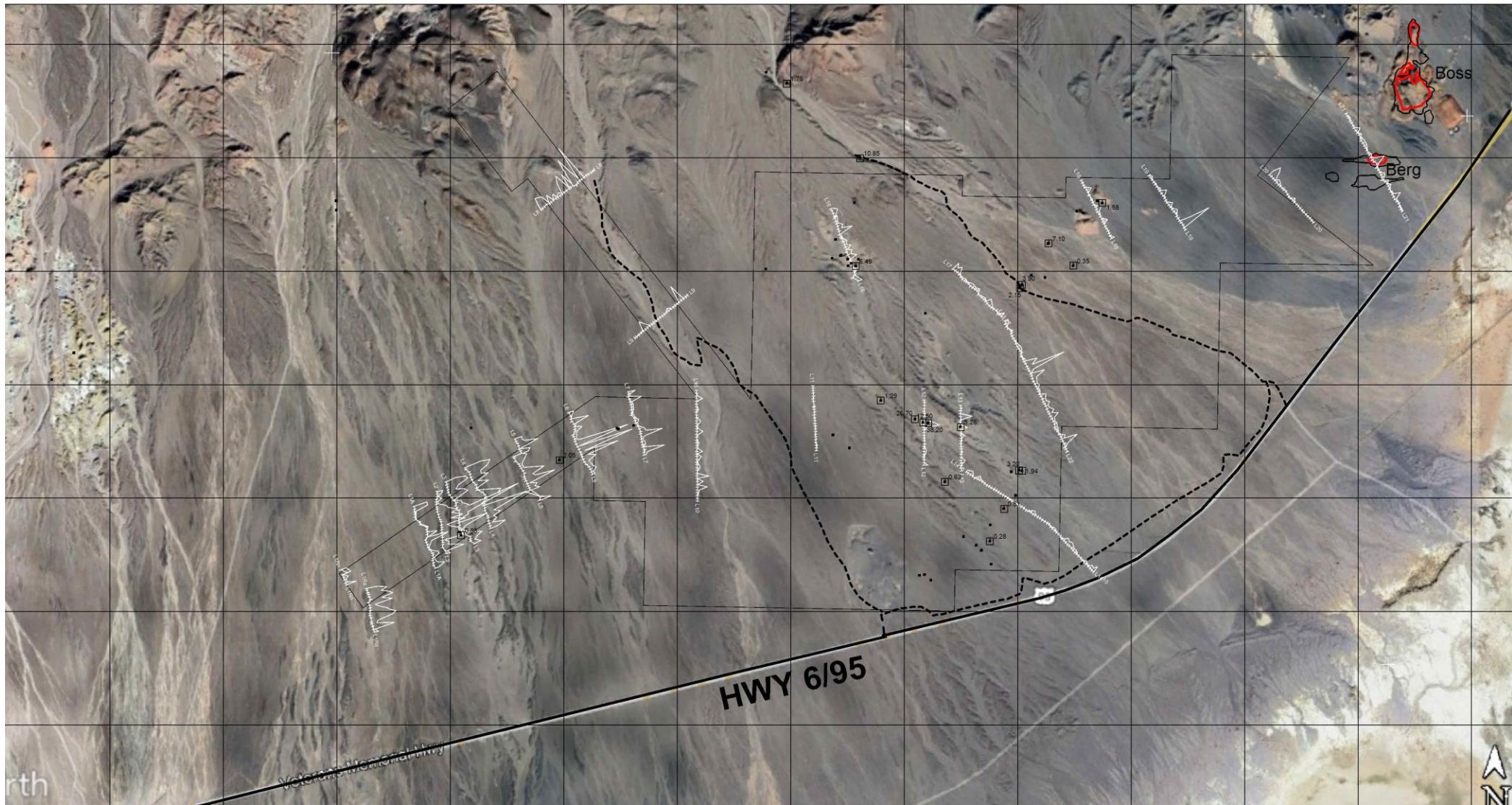
Smee, B.W., 1999: The effect of soil composition on weak leach solution pH: a potential exploration tool in arid environments. Explore: 102, 4-7.



*The **Marigold 8 North Deposit** is seen by IDH Factor under 100 metres of cover*



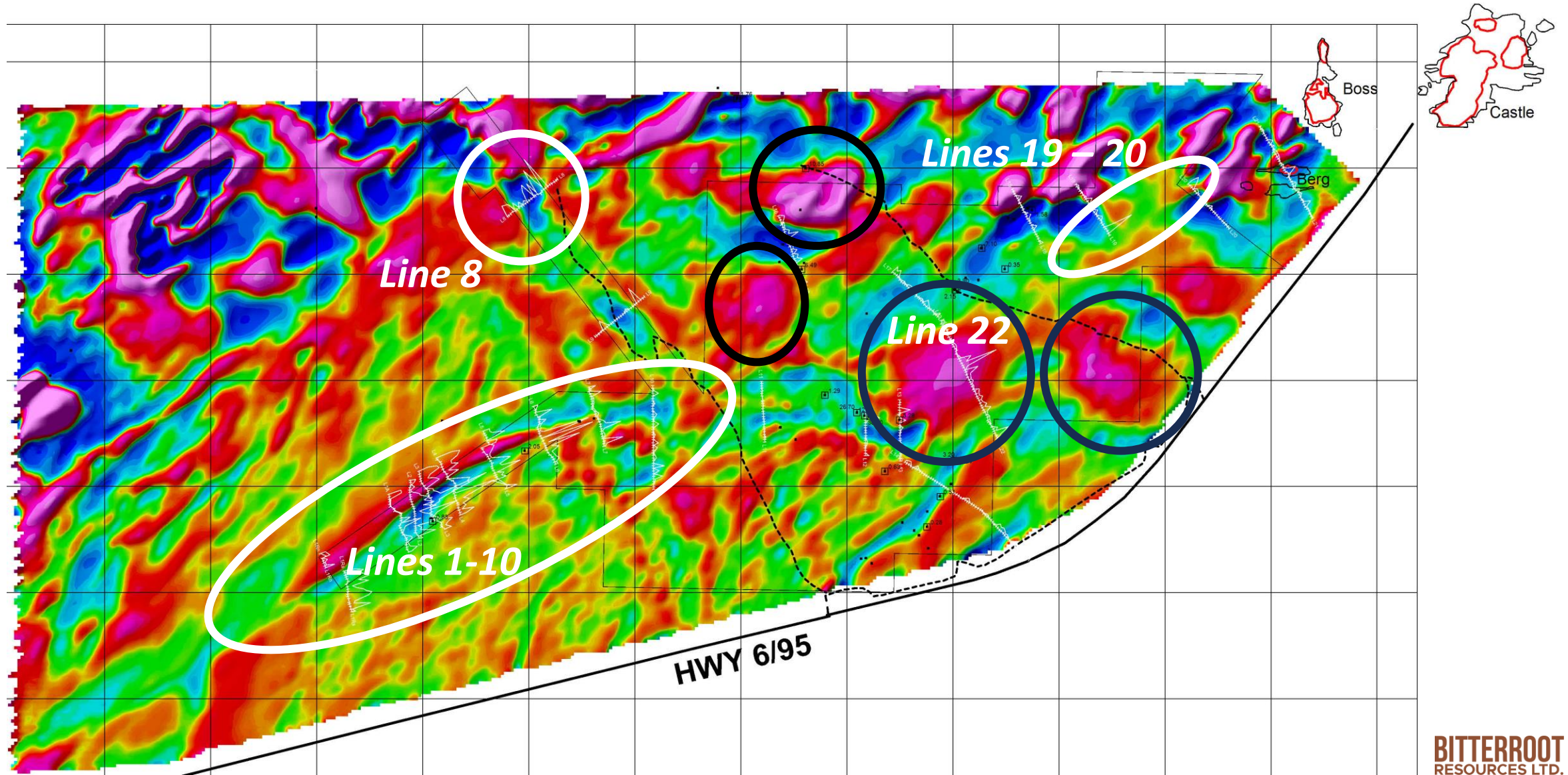
# Nighthawk Soil pH Survey – Strong Responses



**BITTERROOT**  
RESOURCES LTD.

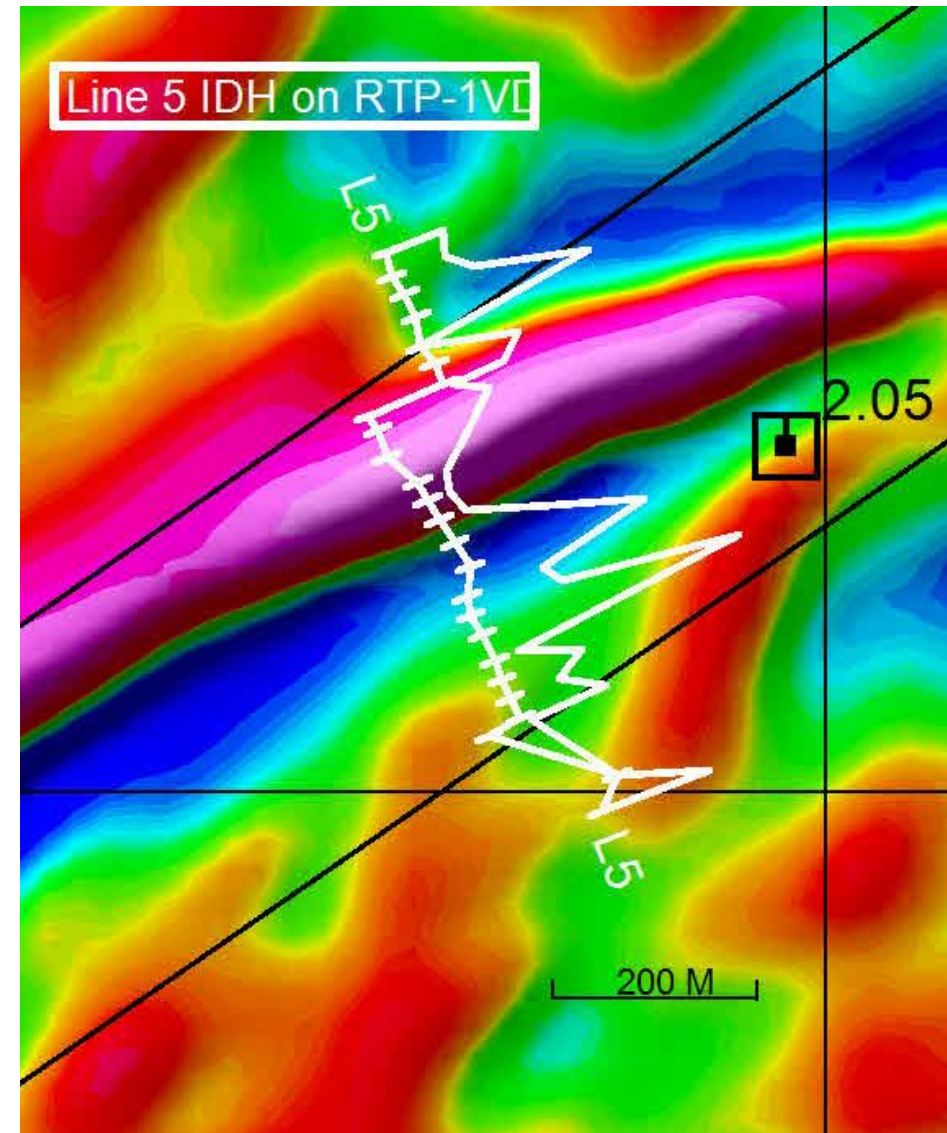
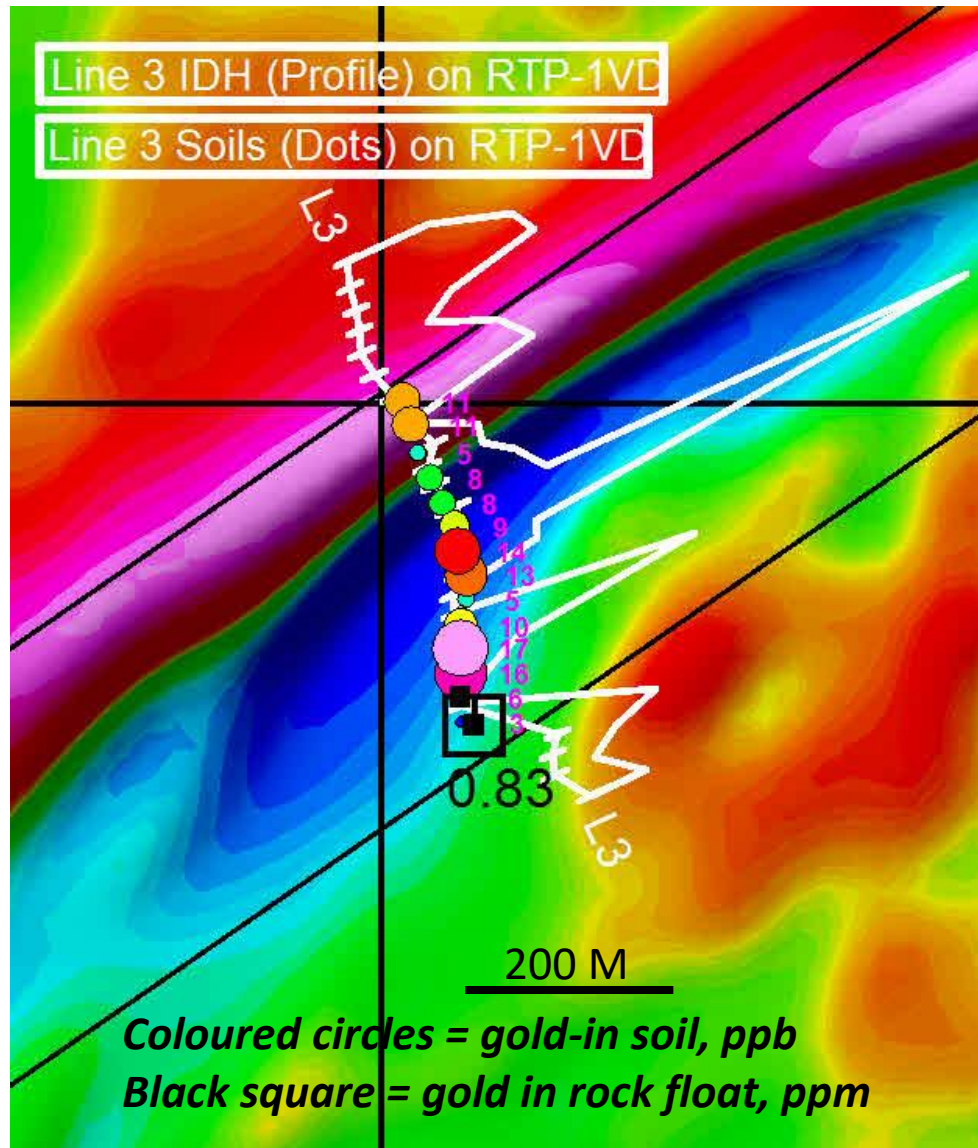


# Nighthawk Soil Survey - IDH factor



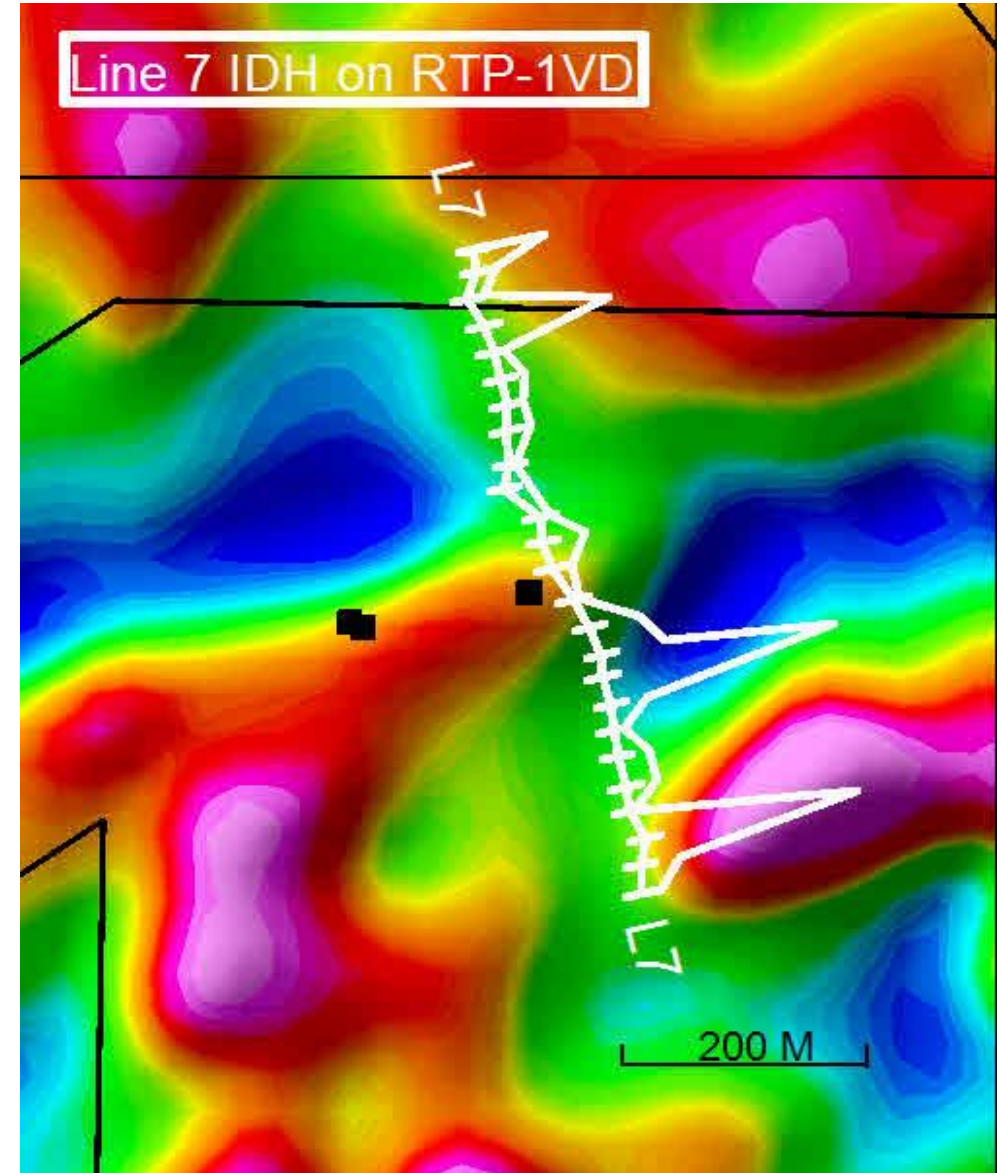
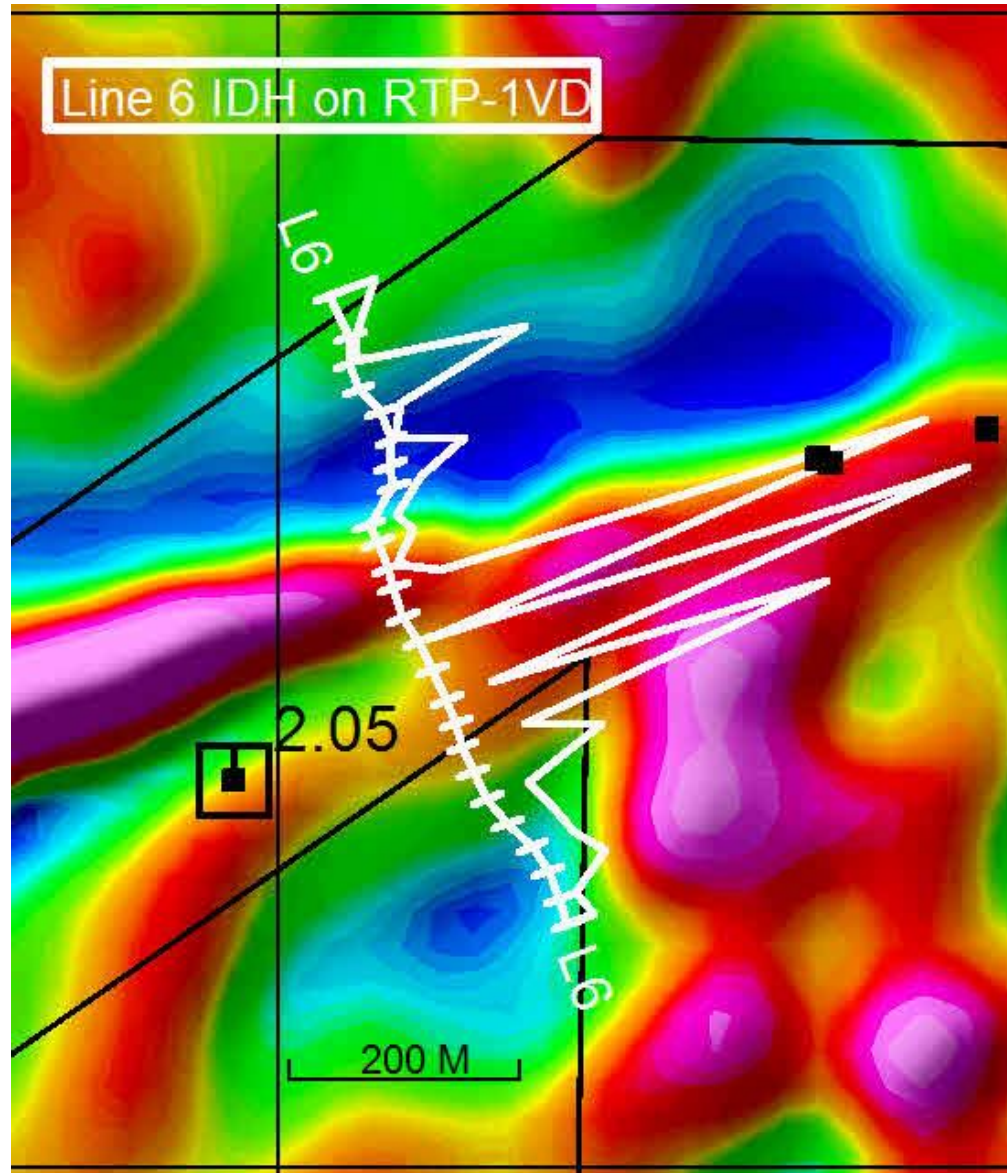


# Lines 3 and 5



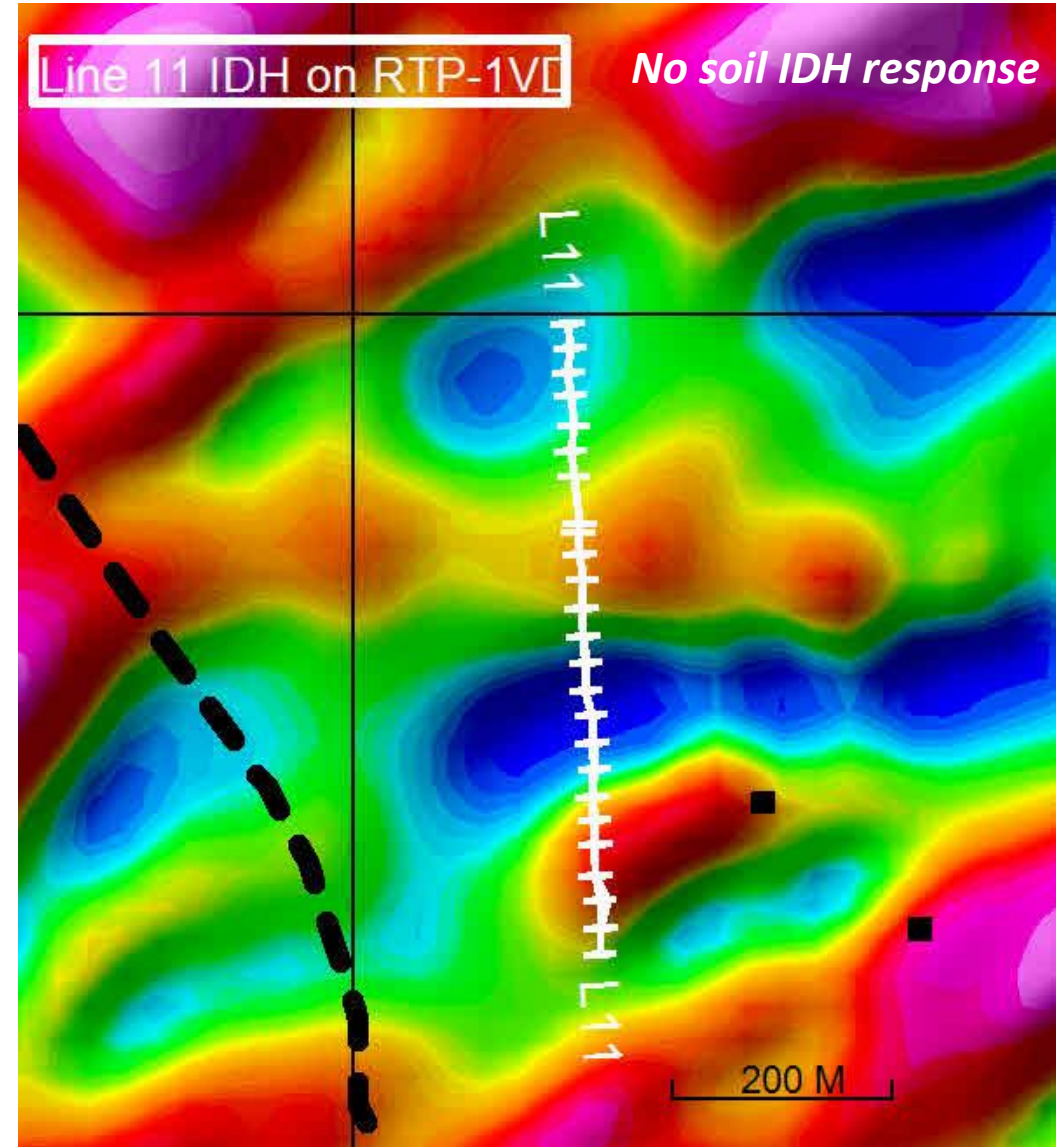
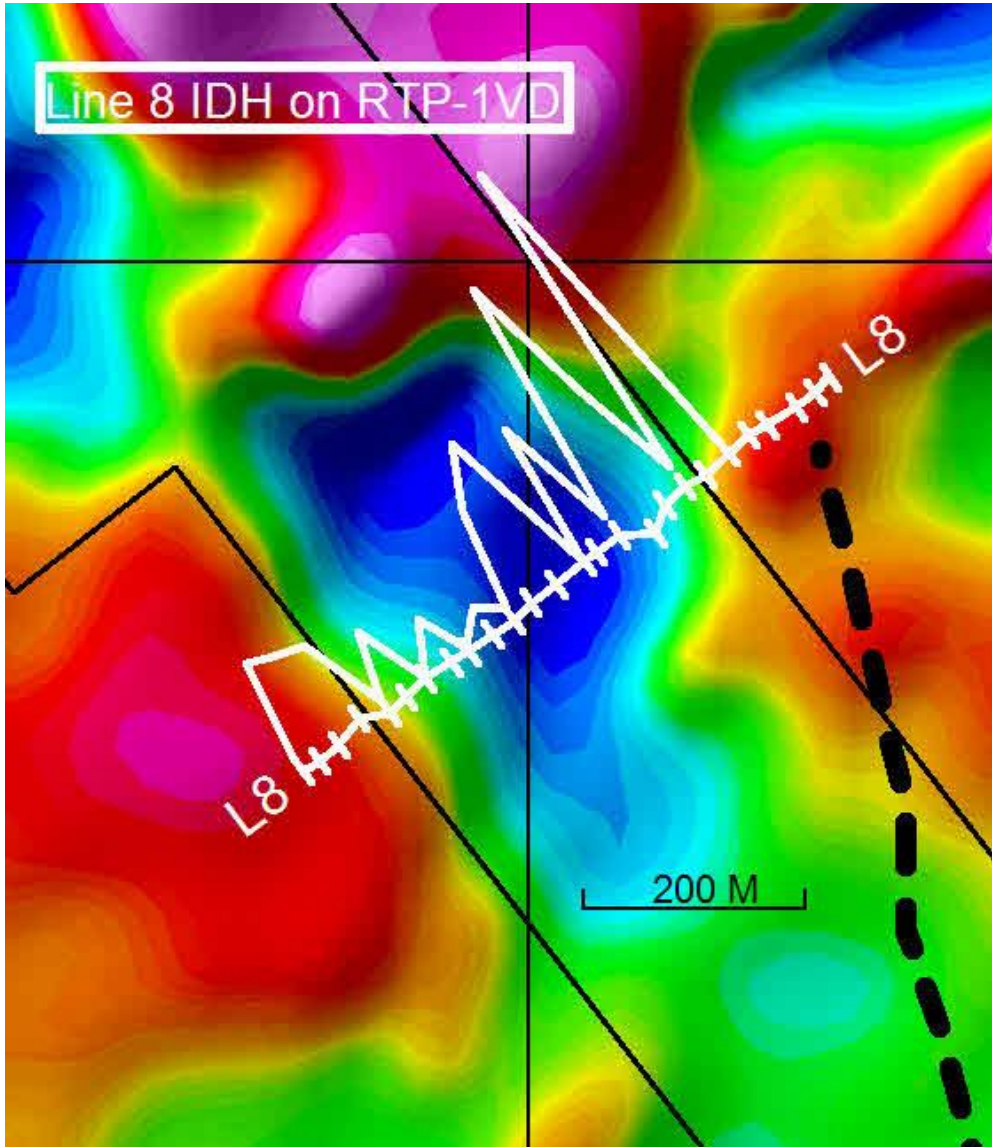


## *Lines 6 and 7*



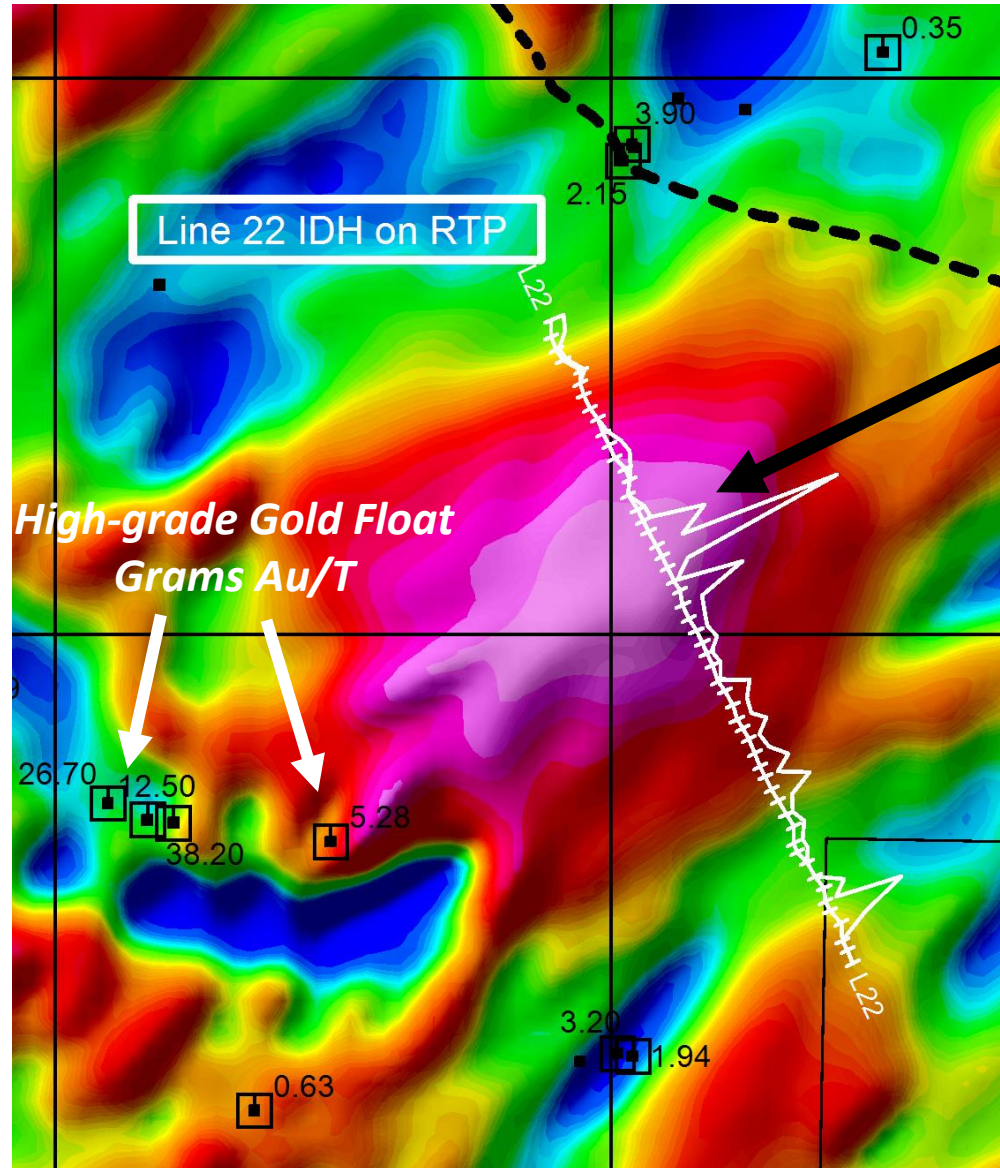


# *Lines 8 and 11*





# ***Line 22 = 1 km - diameter Porphyry Cu/Au/Mo target***



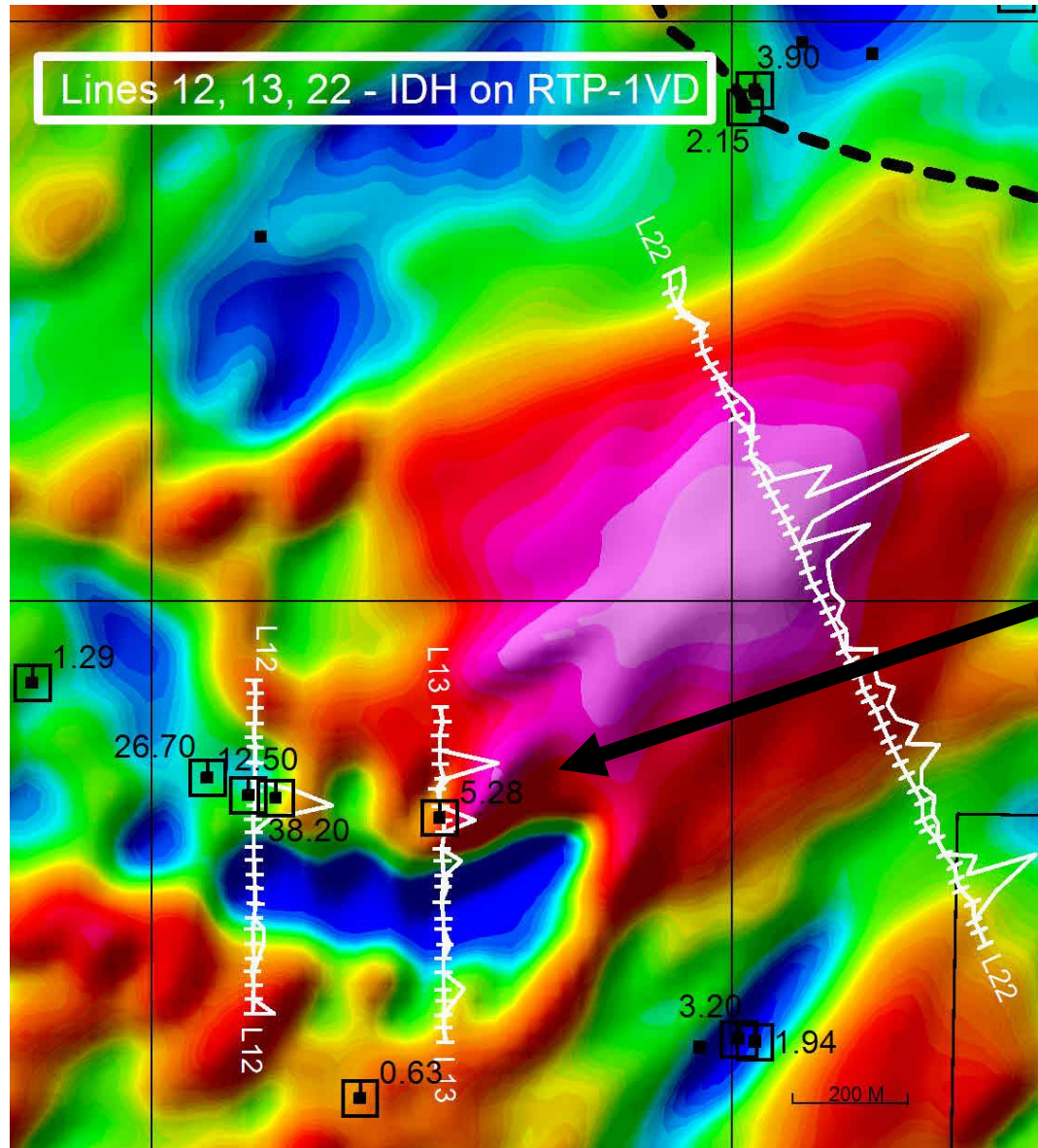
***Test IDH + magnetic anomaly for a  
Cu/Au/Mo – rich core***



**We have 3  
more similar  
targets at  
Nighthawk**

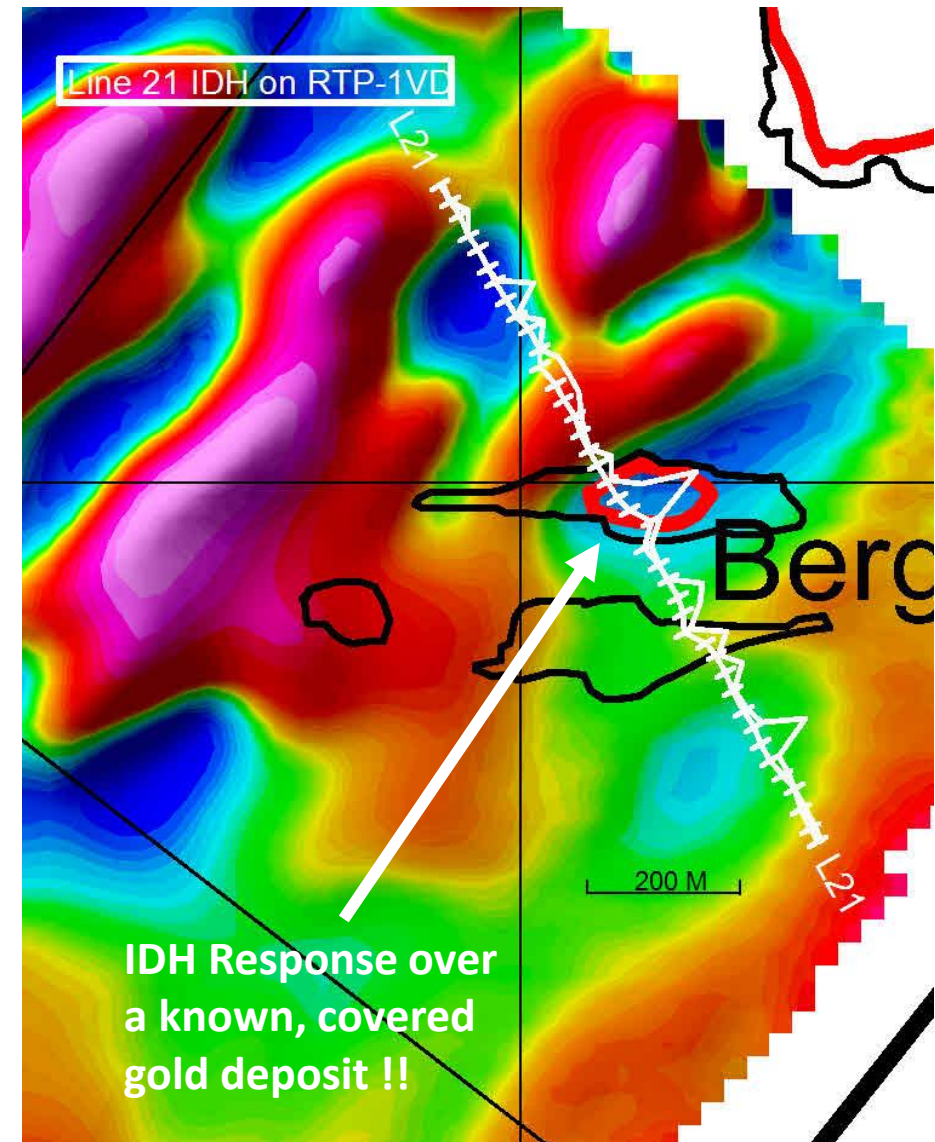
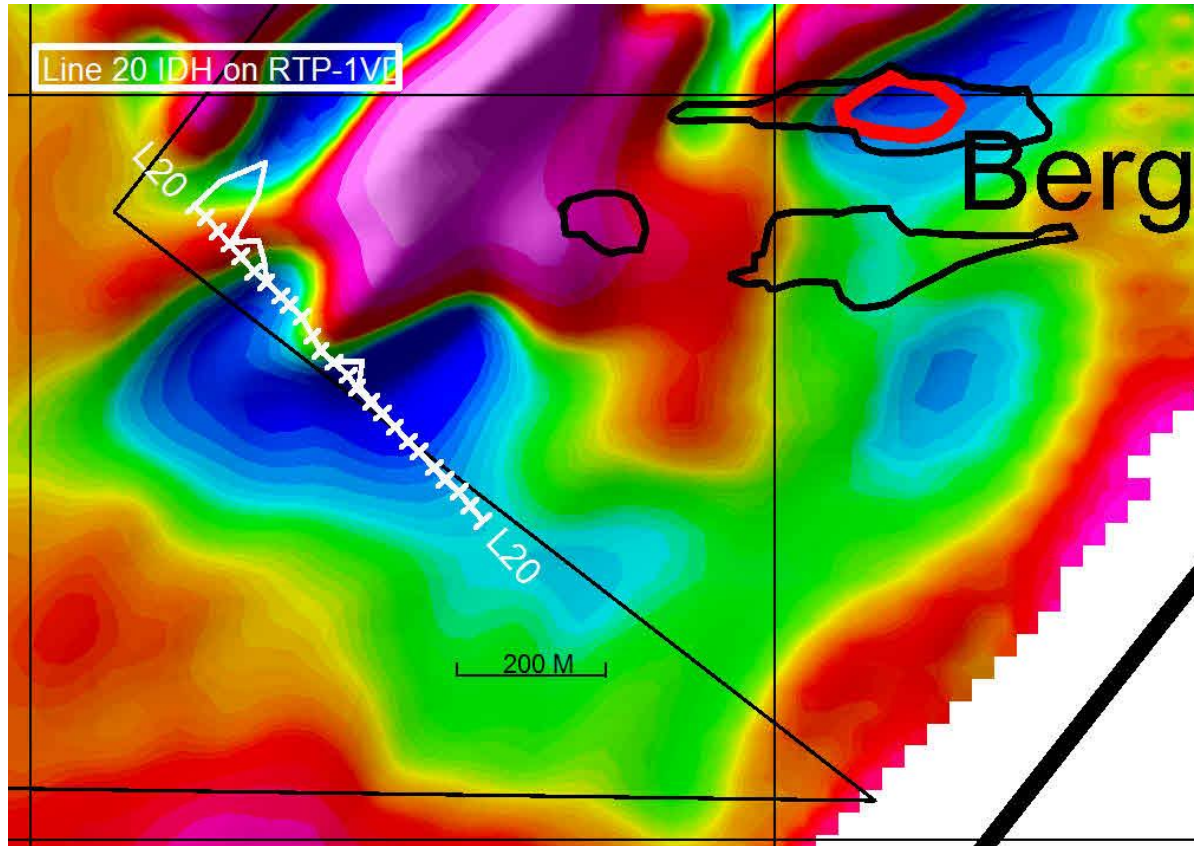


## ***Lines 12 and 13***



***Soil IDH response with  
high-grade Gold on the  
margins of the Line 22  
intrusion (?) as per  
Sillitoe's model***

# Lines 20 and 21





***Nighthawk Project – Multiple Large Targets  
Defined by Aeromagnetics, Prospecting and Soil pH  
Drilling Starts ~Nov 1, 2025  
7-10, 300-400 metre RC Holes Planned***

1. 3 km-long epithermal oxide gold/silver target corridor (Lines 1-10)
2. 1 km-diameter porphyry Cu/Au/Mo target with peripheral high-grade Au/Ag veins (Lines 22, 12 and 13)
3. NW-trending magnetic lows (Line 8) and lines for soil pH follow-up (Lines 19, 20)

# ***Bitterroot Resources – 5-year Chart***

- ***Symbol - BTT on the TSX Venture Exchange,  
BITTF on OTCBB***
- ***125 million shares outstanding***
- ***Directors own 23 million shares***
- ***~ C\$10 million market capitalization***
- ***Leverage to USA exploration success***
- ***Nickel/Copper in Michigan***
- ***Gold/Silver/Copper in Nevada***





# ***Bitterroot Resources Ltd. – Contact***

***Michael Carr, CEO***

***Bitterroot Resources Ltd.***

***Trans Superior Resources, Inc.***

***PO Box 91878***

***West Vancouver, BC, V7V 4S4***

***Canada***

***604 922 1351***

**[www.bitterrootresources.com](http://www.bitterrootresources.com)**

**[infoman@bitterrootresources.com](mailto:infoman@bitterrootresources.com)**

**BITTERROOT**  
RESOURCES LTD.